

Feature

200# WOG
Lead free brass body
Solder x Solder
Solder ends (ASME B16.22)
Spring loaded
Horizontal or vertical installation
AB1953, NSF/ANSI 61 & 372 certified



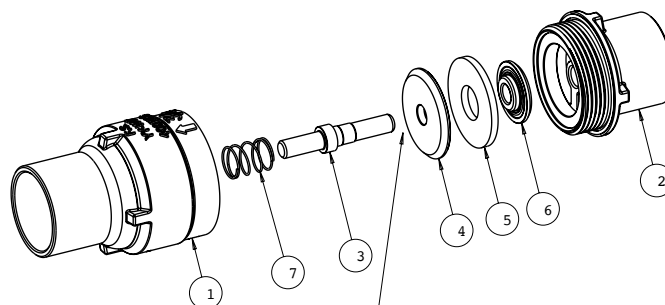
Pressure/ Temperature rating	
1/2" - 2"	400 psi from 15 °F to 200 °F
3"	200 psi from 15 °F to 200 °F

Connection Working Pressure				
Solder used in joint	Working temp (°F)	Max. working pressure (PSI)		
		1/2" - 1"	1 1/4" - 2"	2 1/2" - 3"
95-5 Tin antimony (ASTM B32 grade 95TA)	100	500	400	300
	150	400	350	275
	200	300	250	200
	250	200	175	150

* If maximum connections working pressure is higher than working pressure specified for valve body, consider the latter as the maximum working pressure allowed for the valve

Material

	Part	Material	Specification
1	Body	Lead Free Brass	ASTM B927 C27450
2	End piece	Lead Free Brass	ASTM B927 C27450
3	Stem	Lead Free Brass	ASTM B927 C27450
4	Shutter disk	Lead Free Brass	ASTM B927 C27450
5	Gasket	EPDM Perox	NSF Approved
6	Retaining disk	Lead Free Brass	ASTM B927 C27450
7	Spring	Stainless Steel	ISO 6931-1 4310-301-00-I-NS



* O-ring in sizes 2 1/2" - 3"

Dimension, Cv, Weight

Size	D	A [in]	W [in]	C [in]	Cv [USG/min]	Wt. [lb]	Nominal Pressure [psi]	Min. working Dp [psi]
1/2"	0.627-0.631	2.16	1.13	0.51	2.65	0.22	400	0.5
3/4"	0.877-0.881	2.75	1.43	0.75	5.44	0.37	400	0.5
1"	1.128-1.132	3.39	1.76	0.91	11.5	0.62	400	0.5
1 1/4"	1.378-1.382	3.69	2.22	0.98	20.2	0.95	400	0.5
1 1/2"	1.628-1.633	4.07	2.56	1.10	30.0	1.35	400	0.5
2"	2.128-2.133	4.84	3.22	1.34	48.5	2.14	400	0.5
2 1/2"	2.628-2.632	5.97	4.15	1.50	78.2	4.27	200	0.5
3"	3.128-3.132	6.82	4.90	1.69	103	6.40	200	0.5

