

Product Features

- 200# WOG
- Cast Iron Body
- Flanged Ends
- Variable Orifice Design
- High & Low Pressure Metering points
- Precision Position Indicator Windows
- TopSet Handwheel Assembly

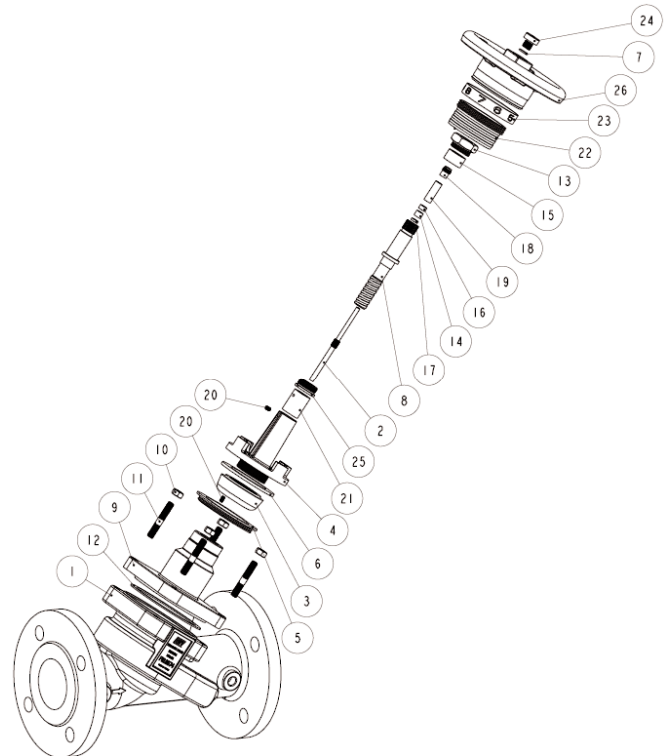


Technical Specifications

Size	2-1/2	3	4	5	6	8	10	12
Max Pressure (PSI)	230	230	230	230	230	90	90	60
Max Temp. F	260	260	260	260	260	260	260	260

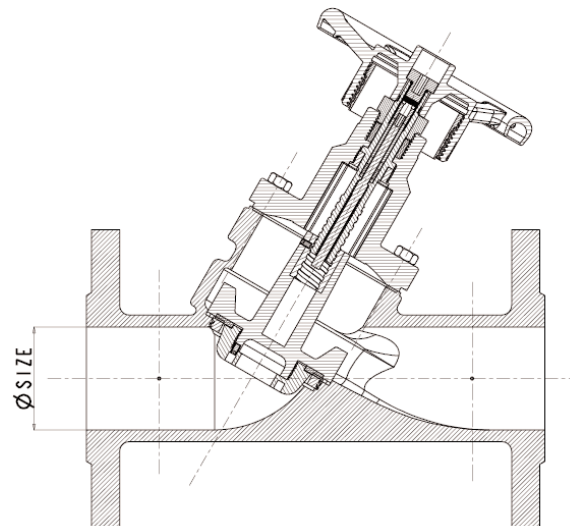
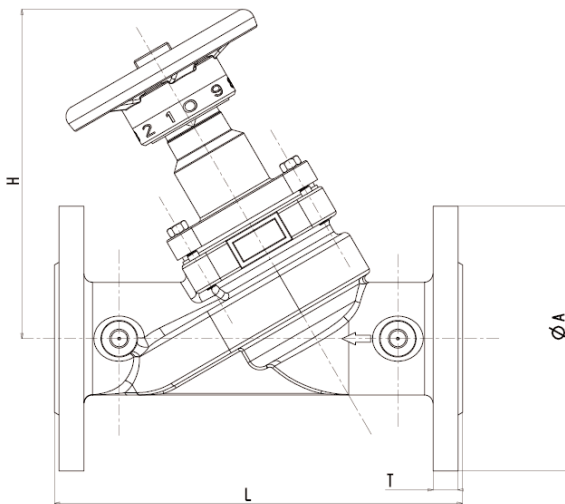
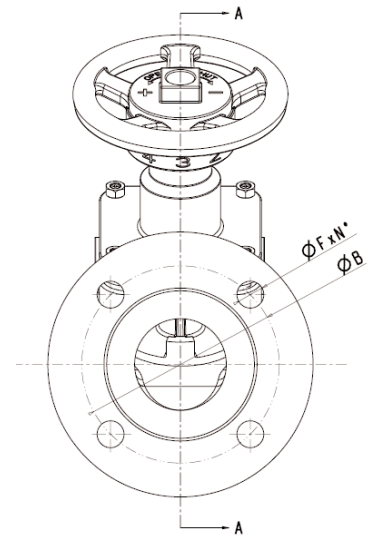
Materials & Specifications

Item	Description	Material	Specification
1	Body	Cast Iron	A126
2	Inner Stem	Bronze	B62 C83600
3	Balancing Cone	Bronze	B62 C83600
4	Disc	Bronze	B62 C83600
5	Seat Disc	Bronze	B62 C83600
6	Disc Gasket	PTFE	PTFE
7	O-ring	FPM	FPM
8	Stem	Bronze	B62 C83600
9	Bonnet	Cast Iron	A126
10	Bonnet Nut	Steel Zinc plated	A36/ Zinc
11	Bonnet Bolt	Steel	A36
12	Bonnet Gasket	Compressed Fiber	Compressed Fiber
13	Packing Nut	Ductile Iron	Ductile Iron
14	Inner Packing	PTFE	PTFE
15	Packing Ring	PTFE	PTFE
16	Bushing	Bronze	B62 C83600
17	Packing Support	Bronze	B62 C83600
18	Inner Packing Nut	Bronze	B62 C83600
19	Nut Extension	Steel	A36
20	Stop Screw	Stainless Steel	Stainless Steel
21	Sleeve	Bronze	B62 C83600
22	Cursor	Aluminum	Aluminum
23	Numbered Ring	Plastic	N/A
24	Handwheel Bolt	Brass	B124 C37700
25	Lock Nut	Bronze	B62 C83600
26	Handwheel	Ductile Iron	Ductile Iron



Dimensions & Weights (inches-lbs.)

Size	2-1/2	3	4	5	6	8	10	12
A	7.0	7.5	9.0	10.0	11.0	13.5	16.0	19.0
B	5.5	6.0	7.5	8.5	9.5	11.7	14.3	17.0
H	8.9	9.2	11.0	11.6	12.3	19.1	20.4	32.8
F	.75	.75	.75	.87	.87	.87	.87	1.00
L	11.4	12.2	13.8	15.8	18.9	23.6	28.7	33.5
N	4	4	8	8	8	8	12	12
T	.7	.8	.9	.9	1.0	1.1	1.2	1.3
Wt. (lbs.)	40	46	80	104	143	282	483	626



Options

For additional configurability and versatility, the Figure # 9574 can also be coupled with the Figure # 9450 Orifice Plate to create a fixed orifice design.

For specific flow characteristics and/or setting information please refer to the 9000 Series Balancing Valve brochure or contact Red-White Valve.