

### Feature

400# WOG  
 DZR lead free brass body  
 F1960 full port  
 Barb (F1960) x Solder  
 PEX end (ASTM F1960)  
 Solder end (ASME B16.22)  
 Chrome plated ball  
 Virgin PTFE seats  
 Blow-out proof stem  
 Double NBR O-ring packing  
 CSA B125.14  
 AB1953, NSF/ANSI/CAN 61 & 372 certified

Option with wing handle available  
 - 5017ABW & 5017SMW (5/8")

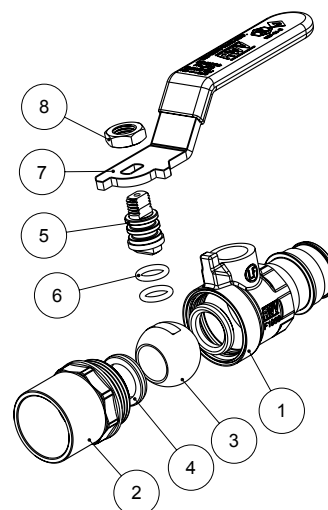


### Pressure/ Temperature rating

300 psi from 15 °F to 160 °F	150 psi max. at 200 °F
------------------------------	------------------------

### Material

	Part	Material	Specification
1	Body	DZR Lead Free Brass	ASTM B927 C27453
2	End piece	DZR Lead Free Brass	ASTM B927 C27453
3	Ball	DZR Lead Free Brass / Cr plated	ASTM B927 C27453
4	Seat	PTFE	PTFE
5	Stem	DZR Lead Free Brass	ASTM B927 C27453
6	O-ring	NBR	NSF approved
7	Handle	Steel / Dacromet® plated	ASTM A36
8	Handle nut	Steel / Zn plated	ASTM A36



### Dimension, Cv, Weight

Size	S [in]	A [in]	H [in]	L [in]	P [in]	C [in]	Wt. [lb]
1/2"	0.627-0.631	2.17	1.38	3.19	0.39	0.51	0.26
3/8"	0.877-0.881	2.85	1.72	2.44	0.50	0.75	0.43
3/4"	0.877-0.881	2.93	1.77	3.58	0.50	0.75	0.44
1"	1.128-1.131	3.46	1.77	3.58	0.73	0.91	0.60

