



# Figure # 1950

Dual Check Backflow Check Valve (1/2"-1")

## Product Features

- 200# CWP
- Bronze Body
- Dual Internal Check Valves
- Threaded Union X Threaded ends



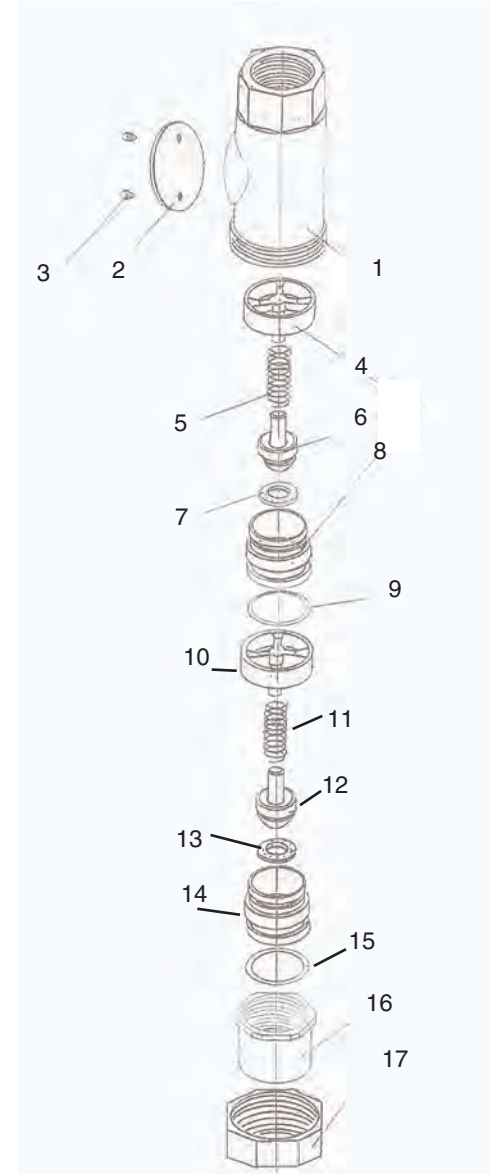
### Pressure/Temperature Ratings

200# CWP

200 degrees F. max temp.

## Materials & Specifications

Item	Description	Material
1	Body	Bronze
2	Plate	Steel
3	Plate Screw	Steel
4	Disc Base	POM Plastic
5	Spring	Stainless Steel
6	Disc	POM Plastic
7	Disc Washer	NBR
8	Disc Seat	POM Plastic
9	Seal	NBR
10	Disc Base	POM Plastic
11	Spring	Stainless Steel
12	Disc	POM Plastic
13	Disc Washer	NBR
14	Disc Seat	POM Plastic
15	Seal	NBR
16	Union End	Brass
17	Union Nut	Bronze



## Dimensions, Weights (inches-lbs.) & Valve Data

Size	1/2	3/4	1
H	2.25	2.25	2.25
L	4.5	4.5	4.5
Wt.- lbs.	1.4	1.5	1.7

